



Laguna
CLAY COMPANY

Glaze Catalog



DIP IN!

TO THE NEW LAGUNA

WITH NEW
CLAYS
GLAZES
PRODUCTS
& WEBSITE

LAGUNACLAY.COM

 [@LAGUNACLAYCO](https://www.facebook.com/LAGUNACLAYCO)

 [@LAGUNACLAY](https://www.instagram.com/LAGUNACLAY)

Laguna Glazes

Laguna Clay Company is one of the largest producers of glazes for schools, manufacturers, and artists, with thousands of stock and custom glazes for temperatures from Cone 06 to Cone 10. We offer one of the most extensive lead-free selections available anywhere. Need a custom color? That's our specialty! Please call, we are here to help!!

Certified Non-Toxic

Laguna lead-free glazes do not contain any material in sufficient quantity to be toxic or to constitute a chronic health hazard when used responsibly. They have been evaluated by a nationally certified toxicologist and are in compliance with ASTM C-1023 and D4236. Laguna lead-free glazes are identified by the Laguna Non-Toxic logo.

Stock Glazes

Laguna Clay Company manufactures hundreds of glazes for all firing ranges—from low to high fire. They are an exceptional value for your studio, school, or manufacturing needs, and are available in liquid and dry form.

Custom and Special Order

Please find information about mixing custom glaze formulas, custom color matching services and associated pricing on our website or go to www.axner.com for packaging and pricing.

Glaze Shelf Life

- We recommend rotating stock and using glazes within 6-12 months.
- Do not store liquid glazes in areas that freeze.
- Do not store dry glazes in damp locations.
- Glaze technicians on hand for your questions.



Testing Glazes

It is essential that you test fire all glazes—stock and custom—in your kiln and under your firing conditions. Laguna Clay Company liability is strictly limited to the replacement of defective material.

Safety: Material Handling

Wear proper safety equipment when interacting with dry clays, glazes and other ceramic materials. This includes but is not limited to a NIOSH-approved respirator. Wear safety gloves when handling ceramic materials and always read the Safety Data Sheet(s) (SDS) on the ceramic materials you purchase.

All Lead Glazes Discontinued

Laguna Clay does not stock leaded glazes. Available by special order only.

General Guidelines for Using Laguna Glazes

Information on the use of Laguna Glazes, including cone ratings and mixing dry glazes, can be found on our website: www.LagunaClay.com



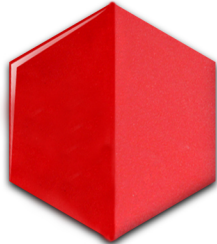
Silky UNDERGLAZES



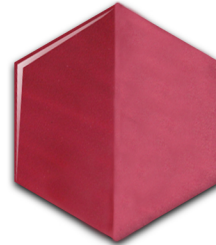
Our Cone 06 opaque "Silky" underglazes are designed for use on bisque and greenware. These colors do not run or blur, and hold their line when used for decorative purposes such as tile painting, sculpture or architectural applications. Silky Underglazes are available in 4 oz's, pints, and gallons.



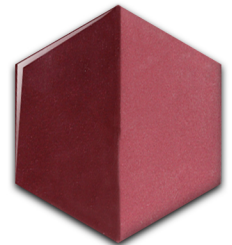
Artist: Pegah Samai



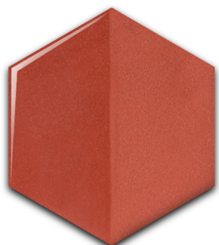
Sassy Red
SIL 82



Dusty Rose
SIL 34



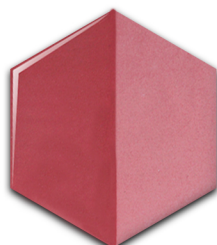
Wine
SIL 46



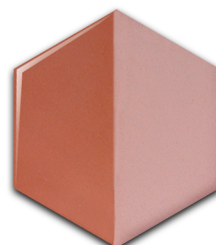
Sienna
SIL 44



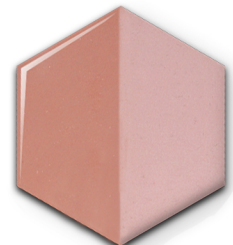
Cinnamon
SIL 3



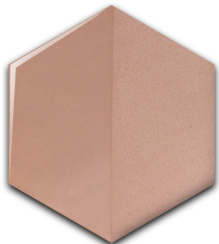
Rosy
SIL 58



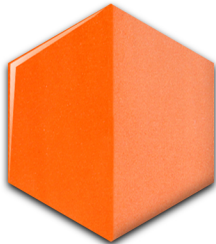
Blush
SIL 16



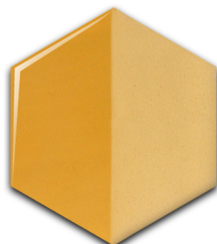
Plush Pink
SIL 41



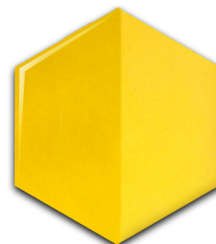
Almond Flour
SIL 18



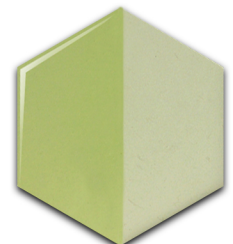
Carrot
SIL 83



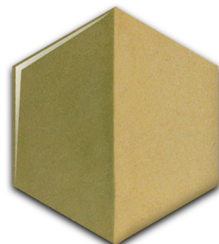
Sunset
SIL 2



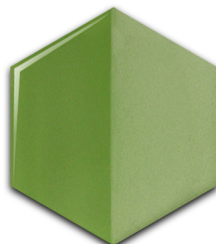
Sunshine
SIL 1



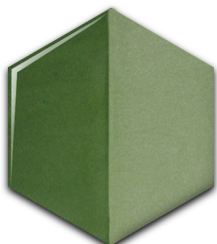
Lime
SIL 28



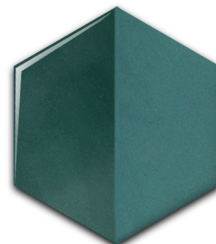
Avocado
SIL 70



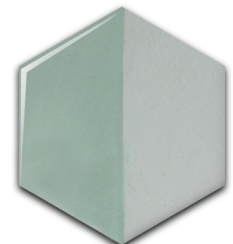
Cactus
SIL 12



Clover
SIL 8

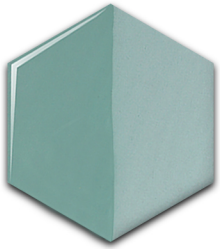


Dark Teal
SIL 7

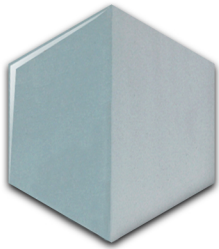


Minty
SIL 49

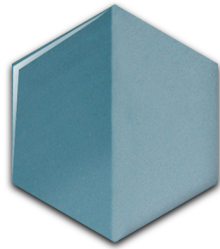
Silky Underglazes Cone 06 (Similar results at Cone 5/6)



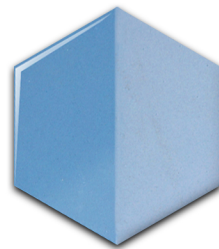
Seaglass
SIL 47



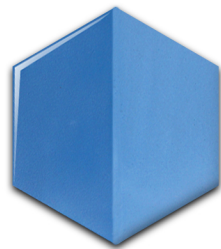
Aqua
SIL 50



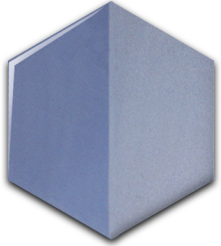
Denim
SIL 67



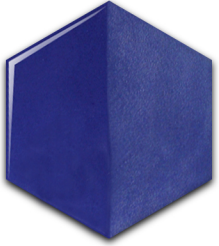
Baby Blues
SIL 24



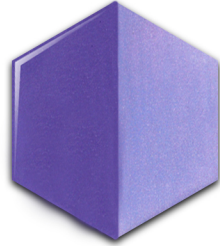
Blue Jay
SIL 11



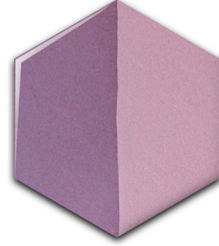
Slate
SIL 71



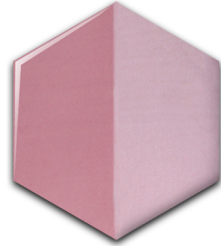
Sapphire
SIL 45



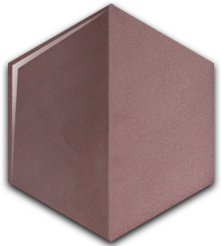
Royal Plum
SIL 84



Lavender
SIL 60



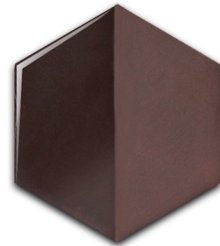
Flamingo
SIL 22



Suede
SIL 61



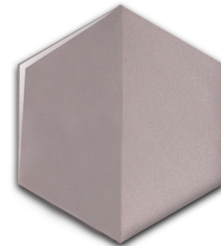
Milk Chocolate
SIL 78



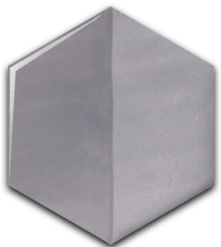
Dark Chocolate
SIL 4



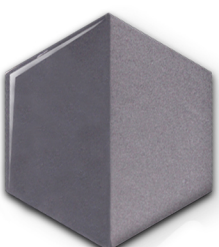
White
SIL 54



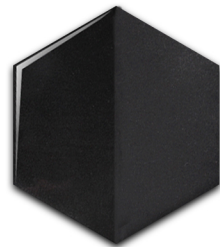
Light Grey
SIL 74



Magnet
SIL 39



Ash
SIL 55



Raven Black
SIL 10



Artist: Mike Tauber

Silky
UNDERGLAZES



EM-1000

Cone 06, Non-Toxic, Low Fire Glazes

All Laguna glazes, including our EM-1000 series are recommended for schools, potters and artists ensuring non-toxic glazes that are food-safe when properly fired.



Cool White
EM-1146 (O)



Alabaster White
EM-1002 (O)



Clear
EM-1130



Super Clear
EM-1050



Matte Clear
EM-1053 (SO)



Eggshell
EM-1100 (O)



Our extensive line of non-toxic colors make Laguna glazes just right for recreation, classroom projects, and artists for all applications.



Nude
EM-1019 (O)



Creamy Peach
EM-1104 (O)



Peach Blush
EM-1103 (O)



Pink Blush
EM-1105 (O)



Cloud Pink
EM-1106 (O)



Marigold
EM-1113 (O)



Golden Aspen
EM-1004 (SO)



Kitchen Yellow
EM-1033 (O)



Sunburst
EM-1021 (O)



Morning Green
EM-1154 (O)



Edgewater
EM-1136 (O)



Sage
EM-1134 (O)



Frog's Pond Green
EM-1011 (SO)



Spring Green
EM-1009 (O)



Apple Green
EM-1027 (O)



Elfin Green
EM-1010 (O)



Jade Green
EM-1115 (O)



Azure Green
EM-1022 (O)

Symbol Key: (M) Matte (T) Transparent (O) Opaque (SO) Semi-Opaque

Test fire all glazes in your kiln and firing environment before using in production. Photographic reproductions differ from actual colors.

Laguna glazes are available in liquid (pints/gallons in stock) and dry.



EM-1000 *continued* Cone 06, Non-Toxic Glazes



All Laguna glazes, including our EM-1000 series are recommended for schools, potters and artists ensuring non-toxic glazes that are food-safe when properly fired.



*"Summer Hibiscus" by Joan Borges.
EM-210 White with underglaze color
and clear overglaze. Electric-fired to
Cone 04.*



Sherwood
EM-1155 (O)



Hunter Green
M-1132 (O)



Peacock
EM-1149 (O)



Blue Teal
EM-1116 (O)



Aqua
EM-1145 (O)



Turquoise
EM-1119 (O)



Silver Blue
EM-1118 (O)



Wedgewood
EM-1117 (O)



Fairy Blue
EM-1013 (O)



Dutch Blue
EM-1014 (O)



Tile Blue
EM-1150 (O)



Persian Blue
EM-1163 (O)



Danish Blue
EM-1023 (O)



Navy Blue
EM-1133 (O)



Teal Blue
EM-1151 (O)



French Lavender
EM-1156 (SO)



Grape
EM-1162 (O)



Purple
EM-1147 (O)



Violet
EM-1109 (O)



Maroon
EM-1108 (O)



Sienna
EM-1107 (O)



Sequoia
EM-1158 (O)



Ginger Snap
EM-1111 (O)



Honey
EM-1112 (O)



Maple Sugar
EM-1024 (O)



Colorado
EM-1157 (O)



Rootbeer
EM-1159 (O)



Derby Brown
EM-1160 (O)



EM-1000 *continued*

Cone 06, Non-Toxic, Low Fire Glazes

All Laguna glazes, including our EM-1000 series are recommended for schools, potters and artists ensuring non-toxic glazes that are food-safe when properly fired.



Fudge Brown
EM-1015 (O)



Taupe
EM-1102 (O)



River Rock
EM-1152 (O)



Silver Gray
EM-1148 (O)



Blue Gray
EM-1161 (O)



Medium Grey
EM-1153 (O)



Charcoal
EM-1135 (O)



Black Gloss
EM-1131 (O)



Black Pearl
EM-1007 (O)



Matador Red
EM1165



Naranja
EM1166



Black Satin
EM-1140 (O)

EM-1000 Satin

Cone 06, Non-Toxic Glazes

EM-1000 Satin Series glazes are a Cone 06, low fire line of low sheen matt colors excellent for use on pottery, architectural tiles and sculpture.



Marigold Satin
EM-1143 (O)



Teal Satin
EM-1141 (O)



Maroon Satin
EM-1139 (O)



Cobalt Satin
EM-1138 (O)



White Satin
EM-1142 (O)



Cheddar Satin
EM-1137 (O)



Rouge
EM1167



Carrot
EM1168



"Purple Ears" by John Toki using Laguna Clay Raw Materials to make his glazes and underglaze colors.



Moroccan Sand

Cone 5/6, Lead-Free, Mid/High Fire Glazes



A broad Selection of gloss, mottled and matte finishes in warm stoneware colors. They perform well on all our Cone 5 prepared moist clays and slip bodies, and many others that mature at Cone 5. Shown in oxidation, some work well in reduction. Moroccan Sand glazes are safe for use on food and beverage containers when properly fired.



Dynasty Red
MS-96



Mandarin Orange
MS-97



Red Satin
MS-98



Orange Satin
MS-99



Snow Flake
MS-26 (O)



Colonial White
MS-63 (MO)



Oatmeal
MS-62 (MO)



Clear
MS-67 (M)



Clear Bright
MS-29



Almond
MS-68 (O)



Almond Spice
MS-69 (O)



Cream
MS-19 (O)



Walnut Spice
MS-60 (MO)



Dutch Sprinkle
MS-50 (MO)



Desert Yellow
MS-39 (O)



Lemon Yellow
MS-13 (MO)



Sunflower Yellow
MS-64 (MO)



Sunflower
MS-84 (O)



Wheat
MS-65 (MO)



Peanut Butter
MS-93 (O)



Rusty Orange
MS-65 (O)



Peach
MS-93 (O)



Peach Blush
MS-85 (O)



Carnation Pink
MS-91 (O)



Chun Red
MS-32 (O)



Maroon
MS-83 (O)

A beautiful example of Moroccan Sand Chun Red MS-32 by one of our Instagram followers: @bear_in_a_clay_shop.



Moroccan Sand *continued*

Cone 5/6, Lead-Free, Mid-High Fire Glazes

A broad selection of gloss, mottled and matte finishes in warm stoneware colors. They perform well on all our Cone 5 prepared moist clays and slip bodies, and others that mature at Cone 5.



Plum
MS-66 (O)



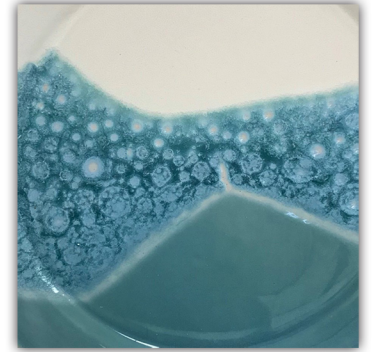
Blackberry Wine
MS-90 (O)



Grape
MS-73 (O)



Amethyst
MS-43 (MO)



Hyacinth
MS-56 (SO)



Blue Frost
MS-36 (MO)



Castile Blue
MS47 (SO)



Sky Blue
MS-82 (O)



Wedgewood Blue
MS-81 (O)



Dutch Blue
MS-80 (O)



French Blue
MS-71 (O)



Alfred Blue
MS-79 (O)



Royal Blue
MS-20 (O)



Antique Blue
MS-55 (O)



Dark Turquoise
MS-23 (MO)



Robin's Egg
MS-18 (O)



Peacock
MS-95 (T)



Oasis Blue
MS-49 (O)



Forest Green
MS-78 (O)



Forest Green
MS-4 (T)



Jade
MS-77 (O)



Speckled Moss
MS-42 (O)



Sea Foam
MS-76 (O)



Spring Green
MS-74 (O)



Chive
MS-75 (O)



Emeraude
MS-54 (O)



Cerulean
MS-52 (MO)



Agate
MS-46 (MO)

*Plate shown above:
One of Stone Leaf Pottery's (Denver, CO) favorite glaze
combos is Robin's Egg MS-18 with Snowflake MS-26.*



Moroccan Sand *continued*

Cone 5/6, Lead-Free, Mid-High Fire Glazes

Shown fired in oxidation, some glazes colors work well in reduction. Safe for use on food and beverage containers when properly fired.



Sage
MS-35 (MO)



Pippen Green
MS-51 (MO)



Fern Mist
MS-38 (O)



Batik Blue
MS-41 (O)



Cappuccino
MS-57 (O)



Green Tweed
MS-22 (O)



Ochre
MS-15 (O)



Golden Green
MS-17 (T)



Rafia
MS-48 (O)



Redwood Matte
MS-12 (MO)



Bamboo Ash
MS-33 (MO)



Sandy Matte
MS-9 (MO)



Turkish Amber
MS-37 (O)



Mottled Spice
MS-44 (O)



Tobacco
MS-10 (O)



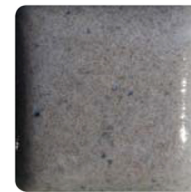
Walnut
MS-59 (O)



Burnt Sienna
MS-34 (O)



French Gray
MS-72 (O)



Speckled Blue
MS-5 Gray (O)



Dark Gray
MS-89 (O)



Gloss Black
MS-6 (O)



High Gloss Black
MS-94 (O)

"White Hart" by Ariel Bowman uses our Moroccan Sand Snowflake MS-26 along with Antique White casting slips to create this detailed work.

Symbol Key: (M) Matte (T) Transparent (O) Opaque (SO) Semi-Opaque
Test fire all glazes in your kiln and firing environment before using in production. Photographic reproductions differ from actual colors.
Laguna glazes are available in liquid (pints/gallons in stock) and dry.



Moroccan Sand

Cone 5/6, Lead-Free, Mid/High Fire Engobes



These clay coloring slips allow for the creation of a dry hue and earthen texture when applied to greenware. They fire to a matte texture at Cone 5/6 and will attain a soft satin sheen at Cone 5/6. Ideal for accentuating the natural color of the clay and for adding decorative accents. Safe for food and beverage containers when properly fired.



Dune White
MS-200 (O)



Persian Blue
MS-201 (O)



Marrakesh Brown
MS-202 (O)



Ghana Black
MS-203 (O)



Mongo Green
MS-204 (O)



Yemen Yellow
MS-205 (O)



Aba Orange
MS-206 (O)

Moroccan Sand Satin Texture

Cone 5/6, Lead-Free Glazes



Satin Texture Glazes are available in dry powder form only. They produce exciting but varied results in color and shade affected greatly by the clay body used and application technique. Best results are achieved by firing in oxidation at Cone 5 to 7. Using witness cones, always test fire before using in production. *MS-125 is the base for the Satin Texture group of glazes. To expand the palette, add your choice of stains or oxides.



Sunrise
*MS-125 (MO)



Smokey Sun
MS-126 (MO)



Soft Clover
MS-127 (MO)



Iron Phoenix
MS-128 (MO)



Burnt Umber Frost
MS-129 (MO)



Apricot Satin
MS-130 (MO)



Raspberry Truffle
MS-131 (MO)



Soft Concrete
MS-132 (MO)



Satin Blue Jay
MS-133 (MO)



Sandbar
MS-134 (MO)

Moroccan Sand Stains

Cone 5/6, Lead-Free, Mid/High Fire Stains



Seven earthen colors which are perfect for highlighting and accentuating. Prepared in a special suspension solution for an easy, even application. Can be used for drawing designs and patterns under or over the glaze application. Safe for food and beverage containers when properly fired. Available in liquid pints only.



Desert Rose
MS-101



Ebony Black
MS-102



Nile Blue
MS-103



Oriental Rust
MS-104



Sudan Yellow
MS-105



Delta Green
MS-106



Nile White
MS-107

Moonscape

Cone 06, Lead-Free, Low Fire Glazes



This group of glazes creates a flowing, lava-like surface layered in stunning soft colors with a velvety texture. Try the **EM-1200 to EM-1213 Gloss/Matte Break-up Surface** and the **EM-1220 to EM-1228 Matte Surface**—the difference is remarkable! Moonscape glazes are mobile and a catching plate is sometimes required. Do not screen when mixing.



Sweet Dreams
*EM-1200 (MT)



Mauve Ice
EM-1201 (MT)



Root Beer Float
EM-1202 (MT)



Raspberry Flow
EM-1203 (MT)



Carnation Cream
EM-1204 (MT)



Peaches N Cream
EM-1205 (MT)



Wintergreen
EM-1212 (MT)



Delta Cream
EM-1213 (MT)



Butterscotch
*EM-1220 (M)



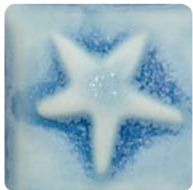
Desert Rust
EM-1221 (M)



Pea Green
EM-1222 (M)



Lime Drops
EM-1223 (M)



Cool Blue
EM-1206 (MT)



Deep Lavender
EM-1207 (MT)



Frosty Navy
EM-1208 (MT)



Obsidian Ice
EM-1209 (MT)



Frosty Gray
EM-1210 (MT)



Turquoise Ice
EM-1211 (MT)



California Dreaming
EM-1224 (M)



Pacific Swirl
EM-1225 (M)



Baltic Tundra
EM-1226 (M)



Cracklin' Rose
EM-1227 (M)



Rain Forest Green
EM-1228 (M)

Would you like a broader palette of Moonscape glaze colors?

*EM-1200 is the base for the Gloss/Break-up Surface group.

*EM-1220 is the base for the Matte Surface group.

Add your choice of stains or oxides to the base.

*"Orchid Pots" by Scott Bennett.
Thrown white earthenware, electric-fired upside down to
Cone 06. Glazed with Moonscape EM-1225 Pacific Swirl
and EM-1224 California Dreaming.*

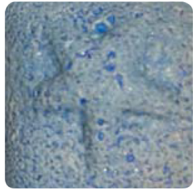


Artificial Salt

Cone 06, Non-Toxic, Low Fire Glazes



When fired in an electric kiln, these Cone 06 low fire glazes simulate the pebbly variegated look of traditional salt glazes that are usually fired in high fire gas or wood fired kilns. Artificial Salt glazes are mobile and a catching plate is sometimes required. Do not screen when mixing.



Hawaiian Crater
EM-1240 (M)



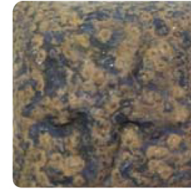
Twilight Crater
EM-1241 (M)



Moss Green & Sand
EM-1242 (M)



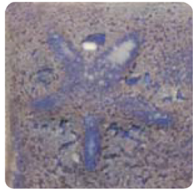
Tea Dust
EM-1243 (M)



Blue-Brown Lava
EM-1244 (M)



Light Cream
*EM-1245 (M)



Dark Ultramarine
EM-1246 (M)



Volcanic Ochre
EM-1247 (M)



Carnation
EM-1248 (M)



Mint-Blue Lava
EM-1249 (M)

Would you like a broader palette of Artificial Salt Glaze colors?

*EM-1245 is the base for the Artificial Salt group. To expand the palette, add your choice of stains or oxides to the base.

Cuerda Seca

Cone 06, Non-Toxic Glazes

These dazzling glazes were inspired by the old world, dry-line technique known as Cuerda Seca. We recommend application on white earthenware or terra cotta bodies.



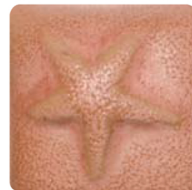
Cat's Cream
*EM-1260 (MO)



Sea Foam
EM-1261 (MO)



Peach Fizz
EM-1262 (MO)



Peach Blossom
EM-1263 (MO)



Old Mauve
EM-1264 (MO)



Coastal Fog
EM-1265 (MO)



Toasty Oatmeal
EM-1266 (MO)



Gray Yellow
EM-1267 (MO)



Lava Smoke
EM-1268 (MO)



Murky Lavender
EM-1269 (MO)



Nocturnal Dust
EM-1270 (MO)



Blue Tiger Eye
EM-1271 (MO)

Would you like a broader palette of Cuerda Seca glaze colors?

*EM-1260 is the base for the Cuerda Seca group. To expand our palette, add your choice of stains or oxides to the base.



Celadon & Gray
EM-1272 (MO)



Aztec Jade
EM-1273 (MO)



Blueberry Satin
EM-1274 (MO)

Mystic

Cone 5, Lead-Free, Mid/High Fire Glazes



These radical glazes redefine "break-up" at Cone 5. Mottled, shimmering colors create an exciting, almost "dancing effect" whether on functional ware or sculpture. *WC-103 is the base for this group of glazes. To expand the palette, add your choice of stains or oxides. The possibilities are unlimited. Mystic glazes are mobile and a catching plate is sometimes required. Available in dry and liquid.



Celadon Froth
WC-100 (SO)



Brilliant Sunburn
WC-101 (SO)



Pink Ice
WC-102 (SO)



Translucent Cream
*WC-103 (SO)



Caramel Steam
WC-104 (SO)



Atlantis Aqua
WC-105 (SO)



Layered Fern
WC-106 (SO)



Antique Jade
WC-107 (SO)



Power Turquoise
WC-108 (SO)



Spotted Blue
WC-111 (SO)



Chocolate Mesa
WC-112 (SO)



Mojave Dusk
WC-113 (SO)



Mint Irish Cream
WC-114 (SO)



Stormy Blue Grey
WC-109 (SO)



Turbulent Indigo
WC-110 (SO)

Crystal Blossom

Cone 5, Lead-Free, Mid/High Fire Glazes



Amazingly wonderful, three-dimensional crystals! Trial and error firing schedules are over. *WC-160 is the base for the Crystal Blossom group. To expand the palette, add your choice of stains or oxides. The possibilities are unlimited. Mystic glazes are mobile and a catching plate is sometimes required. Available in dry and liquid.



Lavender Filigree
*WC-160 (SO)



Light Crystal Tea
WC-161 (SO)



Blue Snowflakes
WC-162 (SO)



Butter Drop
WC-163 (SO)



Mint Coffee
WC-164 (SO)



Translucent Mint
WC-165 (SO)



Crystal Forest
WC-166 (SO)



Plum Blossom Green
WC-167 (SO)

Suggested Crystal Blossom Glaze firing schedule:

There is no such thing as a foolproof firing schedule for crystalline glazes, but here is a good place to start for Cone 5.

- Ramp 250°F per hour to 1250°F; no hold
- Ramp 350°F per hour to 2140°F; no hold
- Ramp 25°F per hour to 2165°F; no hold
- Cool down to 1950°F; hold 3 hours
- OFF



Crackle

Cone 5, Lead-Free Glazes



This group of glazes enhances and fractures light to show off color like you won't believe. *WC-130 is the base for the Crackle Glaze group. To expand the palette, add your choice of stains or oxides to the base. These glazes are mobile and a catching plate may be required on some forms. Available in dry and liquid.



Fractal Cream
WC-130 (T)



Tang Lime
WC-131 (T)



Analin Green
WC-132 (T)



Apache Green
WC-133 (T)



Emerald Isle
WC-134 (T)



Lacy Mauve
WC-135 (T)



Catalina Crackle
WC-136 (T)



Skye Crackle
WC-137 (T)



Twilight Blue
WC-138 (T)



Ocean Teal
WC-139 (T)



Forest Jade
WC-140 (T)



Desert Skye
WC-141 (T)



"Bottle," by Jon Pacini with our NEW Dry Lake glazes on Mission Red Clay.

Cone 5, Lead-free

NEW

Laguna
CLAY COMPANY

Dry Lake
glazes

A glaze inspired by Earth's geological wonders!

Black Ore DL-105

Fossil White DL-100

Lava Lakes DL-108

Hoo-Doo Orange DL-109

Sulfur Vent DL-110

Open Meadow DL-111

Metamorphic Blue DL-102

Teton Teal DL-101

Glacier Ice DL-104



Dynasty

Cone 5, Lead-Free, Mid/High Fire Glazes



Experience the timeless beauty of this palette of Cone 5 Matte and Gloss glazes which evoke nature's most colorful semi-precious stones. Prepared in liquid form for brushing application and in dry form for spraying and dipping.

Matte Glazes: MS-250 to MS-267; Base *White Pebble MS-250. Do not screen this sub-group of glazes.



*White Pebble
MS-250



Yellow Ore
MS-251



Canary
MS-252



French Green
MS-253



Sea Foam
MS-254



Aqua Blue
MS-255



Light Mauve
MS-256



Chocolate
MS-257



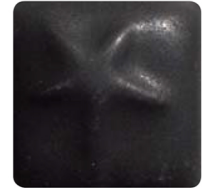
Antique Turquoise
MS-258



Old Copper
MS-259



Charcoal
MS-260



Black Silk
MS-261



Milky Way Blue
MS-262



Olive Leaf
MS-263



Taupe
MS-264



Tangerine Ice
MS-265



Ruby Dust
MS-266



Milky Garnet
MS-267

Gloss Glazes:
MS-220 to MS-231;
Base *Nebula Blue MS-220.



*Nebula Blue
MS-220



Desert Blue
MS-221



Sang-de-boeuf
MS-222



Desert Sunset
MS-223



Mint Spice
MS-224



Smokey Gray
MS-225



Fiesta Lime
MS-226



Lime Burst
MS-227



Sea Gold
MS-228



Sea Grass
MS-229



Desert Sand
MS-230



Brown Slate
MS-231



Carly Gibran loves our Laguna Clay Frost WC-437 along with our Bright Clear MS-29 and it makes her work look delicate yet, functional. Find her @gibranstudios on Instagram.

Symbol Key: (M) Matte (T) Transparent (O) Opaque (SO) Semi-Opaque
Test fire all glazes in your kiln and firing environment before using in production. Photographic reproductions differ from actual colors.
Laguna glazes are available in liquid (pints/gallons in stock) and dry.



Creatable Colors

Cone 06, Lead-Free, Low Fire Glaze System

The ideal, compact “no fail” glaze system that’s as easy to use as tempera paint and serves students to professionals. Empower the arts in your community with hands-on cuerda seca-style murals, create pieces to compliment architectural landmarks or simply create masterworks.



Black
EM-2100



White
EM-2101



Yellow
EM-2102



Light Blue
EM-2103



Cobalt Blue
EM-2104



Dark Blue
EM-2105



Maroon
EM-2106



Pink
EM-2107



Buttercup
EM-2108



Blue Green
EM-2109



Yellow Green
EM-2110



Dark Teal
EM-2111



Walnut Brown
EM-2112



Valley Grape
EM-2113



Peach
EM-2114



Old Gold
EM-2115



Strawberry Red
EM-2116



Flaming Orange
EM-2117



Majolica
EM-2118



Clear Gloss Low Expansion
EM-2134



Clear Gloss
EM-2135



Clear Matte
EM-2136

“Fall Leaves,” created by our Laguna Clay staff using the Creatable Colors to capture the feeling of Autumn. Glaze colors: Old Gold, Peach, Maroon, Buttercup, and Flaming Orange.



Creatable Colors

The ideal, compact, Cone 06 glaze system.



Versa 5

Cone 5, Non-Toxic, Mid/High Fire Glazes and Underglazes



A compatible palette of glaze color with the look of Italian Renaissance ceramics for all types of glaze artists. Fluid consistency as a stand-alone glaze on bisque. Brilliant underglaze at Cone 5 previously thought possible only in low fire ceramics.



Eggplant
MS-307



Dark Plum
MS-308



Lavender
MS-309



Apple Green
MS-314



Brown
MS-315



Dark Coral
MS-316



Clear
*MS-300



White
MS-301



Turquoise
MS-302



Royal Blue
MS-303



Navy Blue
MS-304



Burgundy
MS-305



Pink
MS-306



Roman Violet
MS-310



Black
MS-311



Teal
MS-312



Green
MS-313



Orange
MS-317



Red
MS-318



Golden Yellow
MS-319



Bright Yellow
MS-320

Versa 5

An Innovative System
of Cone 5 Glazes
and Underglazes

We are in love with another Instagram follower's work,
@firefly778 and her use of our Versa 5 Glazes and Underglazes.

Symbol Key: (M) Matte (T) Transparent (O) Opaque (SO) Semi-Opaque
Test fire all glazes in your kiln and firing environment before using in production. Photographic reproductions differ from actual colors.
Laguna glazes are available in liquid (pints/gallons in stock) and dry.

Dry Glazes

Cone 10, Lead-Free, High Fire Glazes



Brilliant Black
SG-82 (O)

This very black glaze is somewhat liquid and fires at Cone 9 or 10. The surface is smooth and very glossy. Not recommended for reduction.



Chun Base
V-3 (O)

Excellent over all Cone 10 bodies, but best over porcelain. Smooth, fluid surface can be nicely altered with the use of oxides including copper, cobalt and rutile/iron.



#1 White
V-18 (O)

A semi-gloss white when thick and a gray/white when thin. Best on stoneware with medium reduction.



White Gloss
SG-91 (O)

This smooth, sanitary white glaze is compatible at Cone 9 or 10 firing temperatures. Well suited for oxide or stain decoration or additions. Not recommended for reduction.



G-Matte Base
V-5 (O)

Smooth, light tan base that can be altered with the use of oxides. Accepts most brush decorations with a variety of oxides. Looks best in medium to heavy reduction.



Barnard Green
V-20 (T)

Smooth surface glaze that is transparent green on porcelain and brown/green translucent on dark clays. Works well with some oxides and fires best with medium reduction.



Clear
SG-93

This transparent glaze is excellent for color development at Cone 9 or 10. A good base glaze for dark vivid colors, or add opacifier with stains for wonderful pastels. Not recommended for reduction.



HT51
V-6 (T)

A base glaze with a light gray/green tint. Accepts most oxides as brush decoration or as additives. Looks best in medium to heavy reduction.



Flambe Blue
V-21 (SO)

Smooth translucent glaze that is a strong blue when oxidized and a deep blue/maroon when heavily reduced.



Clear
SG-262

A high gloss transparent glaze with high silica for craze resistance. A good base for color.



Cee Clear
V-12 (T)

This smooth glaze tints green on porcelain and gray on stoneware. Oxide colorants may be added to the glaze or applied with brush decoration. Best when reduced heavy to medium.



Sun Valley
V-30 (T)

A rich rutile blue with caramel highlights. Likes to be fired hot in reduction, but turns to a translucent khaki when fired in oxidation.



Alfred Celadon
V-1 (T)

This contemporary variation of an ancient glaze comes from one of America's leading ceramic universities. Beautiful green to gray picks up clay color through transparency. Compatible with most brushed oxides in a reduction.



Laguna Clear
V-15 (SO)

Semi-opaque glaze with strong hints of blue and white. Accepts most oxides as colorants and as brush decoration.



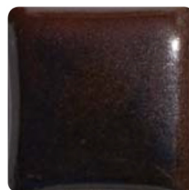
Purple Surprise
V-36 (O)

A deep cobalt blue with floating pink blooms. Similar effect whether fired in oxidation or reduction.



Black/Brown
V-2 (O)

The smooth surface reveals a broken brown/black pattern. Black if double-dipped or when thick. Reacts well with light colored glazes, splashed or poured on top. Fluid.



KCNST
V-17 (O)

This plum glaze reacts well under an application of dipped or poured lighter color glazes. Consistent, semi-fluid, and accepts a strong reduction.



*Bottle by Rick Christie.
WC-379 B-Mix Cone 10,
WC-554 Turquoise Matte and V-30 Sun Valley,
reduction-fired in Cone 10. 5" x 6".*

Dry Glazes *continued*

Cone 10, Lead-Free, High Fire Glazes



Copper Red
V-37 (SO)

You'll love the wonderful copper red look of this glaze. Start reducing at Cone 06. Over reduction can lessen or even eliminate the desired results, so experiment first!



This mural was installed at the home of Ted and Lida Urban. Created by John Toki using Laguna raw materials for coloring.



MG-2 White Matte
WC-522 (MO)

A semi-matte, opaque white glaze. Works best in medium reduction in which it acquires a slight bluish tint. Reacts well with oxides.



White Waxie
WC-531 (O)

Semi-matte glaze with a waxy finish. Works very well with brushed oxide decoration to produce soft color variations. Reacts well with oxides, and works best under medium reduction firing.



Stony Matte
WC-555 (MO)

An off-white glaze with a semi-matte finish. Works nicely with oxide decoration. Best results are obtained with a medium application and light to medium reduction firing.



Tan Matte
WC-524 (MO)

This semi-matte glaze fires off-white or beige depending on the clay body and amount of reduction. Reacts well with iron as a colorant. A thin to medium application is recommended.



Eggshell
WC-532 (O)

A white glaze with an eggshell texture. It reacts well with oxides, and produces best results in light to medium reduction firing.



Iron Red
WC-556 (O)

A member of the Tenmoku and Kaki families. Rich red, semi-gloss, some mottling. Brightest over porcelain or white stoneware fired in oxidation. Dark clay bodies or reduction firing tend to make this glaze red-black.



Tenmoku No. 1
WC-525 (O)

Known traditionally in the Orient as the "hare's fur" glaze because of the way the brown and black break together on heavy applications. Not suited for use with oxide decoration.



Celadon
WC-550 (T)

Celadon was highly prized in ancient Asian civilizations and is still popular today. Most typically used with porcelain, and reacts beautifully with most oxides in reduction firing.



Blue Brown
WC-557 (O)

Rich blue in areas where the glaze is thicker, and brown where it breaks and becomes thinner. Should be fired in medium reduction for best results. Becomes milky yellow in oxidation.



Tenmoku No. 2
WC-526 (O)

Has characteristics much like Tenmoku No. 1, but tends to show more plum-red in conjunction with the black. Not suited for use with oxide decoration.



K-9
WC-553 (SO)

Semi-opaque glaze allowing the clay texture to show through. Tends to contain deep gray-blue with some mottling. Reacts well with oxides such as iron and rutile. Works best in medium reduction.



Artificial Salt
WC-559 (O)

Create a beautiful salt glaze appearance without the salt and accompanying harsh fumes.



Chun
WC-527 (O)

A semi-opaque glaze which is transparent when applied thin. Reacts well with iron, copper and cobalt. Traditionally used for glazing porcelain and works well in light to medium reduction firing.



Turquoise Matte
WC-554 (MO)

A blue-green glaze with some mottling in larger areas. Does not react well with oxides and should not be fired in heavy reduction.



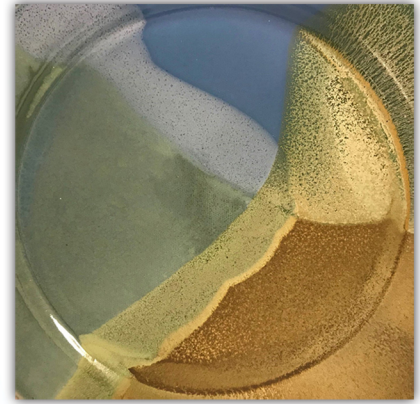
Birch White
WC-511 (O)

A smooth, soft-matte opaque white glaze. Reacts nicely with oxides, which vary in color and texture depending on kiln atmosphere. Medium application works best.

Symbol Key: (M) Matte (T) Transparent (O) Opaque (SO) Semi-Opaque
Test fire all glazes in your kiln and firing environment before using in production. Photographic reproductions differ from actual colors. Laguna glazes are available in liquid (pints/gallons in stock) and dry.

Dry Glazes *continued*

Cone 5-10, Lead-Free, Mid/High Fire Glazes



Moroccan Sand Combos: Dutch Blue MS-80, Fern Mist MS-38, and Robin's Egg MS-18, on RSMC-429 Red Cone 5 clay body.



#16 Transparent
WC-520

A good, all-purpose clear gloss glaze which fires from Cone 5-10. Works well with oxide colorants, and a light to medium application is recommended.



Clear Gloss
SG-113

A smooth surface that is best achieved by applying with medium thickness. Contains zinc. Best fired in oxidation.



Jon's Clear
WC-558

An alternate to #16 Transparent. Excellent on porcelain and smooth stoneware. Apply thinly for best results. Fires Cone 5-10.



Barium Matte
SG-122 (MO)

Medium application is best for this clear semi-matte, non-fluid glaze. Excellent in color development. Best in oxidation.



Lido Satin
WC-501 (O)

Semi-gloss glaze in a light oatmeal color with some mottling. Best results are produced with medium application and light to medium reduction.



Light Blue
SG-98 (O)

Blue, mottled glaze that is best dipped once to medium thickness. Very smooth surface. Fires best in oxidation.



Satin White
SG-130 (O)

A smooth, satiny white glaze that is best when applied to medium thickness. Oxidation only.



Italian Straw
WC-504 (O)

Mottled golden beige glaze reacts nicely with various colorants to produce softer textures and colors.



Brown
SG-99 (O)

A warm, smooth brown with shades of gold. Best in oxidation.



White
SG-138 (O)

It is an excellent glaze for brush work. Good base for stain additions to produce pastel colors. Best in oxidation or light reduction. Contains no zinc.



Semi-Clear Matte
WC-508 (MO)

Recommended for use over engobe and oxide decoration. Reacts well with various oxide colorants. Light to medium reduction firing recommended.



Crystal Palace #10*
WC-561

Produces spectacular crystalline effects that are inconsistent, erratic, but exciting. Fire Cone 5-10, using simple crystal firing instructions available at www.laguna.com. Add 1-3% rutile, titanium dioxide and cobalt plus zinc for enhanced variations.



Klaus Hard White Satin
SG-151 (O)

A satin white glaze ideal for surfaces that need special hardness. Contains alumina and is ideal for floor tile.



Horizon
WC-509 (O)

Contains tin for a bright clean white color. Medium application is recommended. Does not take heavy reduction firing well.



White
SG-103 (O)

This smooth glaze is very stable and the white is consistent when applied in a thick manner. Best in oxidation. Contains zinc.



Clear
SG-157

Smooth surfaced glaze best under medium application. Contains no zinc and a good base for deep colors with dark stain additions. Can be used for chrome/tin stain brushwork. Best in oxidation.



China White
WC-510 (O)

Nice Chun-type glaze is semi-opaque white with medium application and transparent when applied thin. Works well with oxide colorants. Heavy reduction firing should be avoided.

Dry Raku

Lead-Free, Low Fire Glazes



Due to the many uncontrollable variables involved in Raku firing, the glaze descriptions are general with results varying from one firing to the next. Due to the typically crackled glaze effects and open clay bodies used, Raku-fired pieces are not suitable for food or drink containers. For dry glaze mixing instructions, go to www.lagunaclay.com.



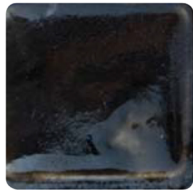
Bronze
R-21

Smooth metallic dark and light copper/bronze produces extremely striking patterns. Can give the appearance of a new penny on an old penny. Medium application suggested.



White Matte
R-1

A light, dry, textured glaze that is not fluid. Medium application is recommended.



Blackfoot
R-12

An extremely fluid gloss black. Medium-plus application suggested.



Awabi Shell
R-22

All-purpose glaze for Raku work yielding an iridescent abalone shell effect that reacts well with various oxides. Medium to heavy application is recommended.



Tutti Frutti
R-2

This glossy, fluid glaze depends on copper to create colors ranging from greenish yellow to iridescent purple and maroon. Thickness of application can alter results.



Copper
R-13

A spectacular metallic, iridescent glaze that produces a myriad of colors including maroon, gold, silver, blue, red and copper. Medium to thick application suggested.



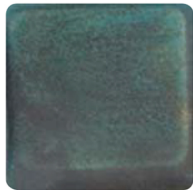
Uguisi Nightingale
R-23

This glaze can produce varying shades of iridescent blue, green and purple depending on thickness of application and firing conditions.



Soda
R-8

This light colored, textured glaze is not very fluid. Accepts reduction and develops patterns of grey—sometimes black. Medium application suggested.



Lithium Slip
R-14

A smooth, non-glossy, surface of maroon and green. Provides great patterns with reduction. Medium application suggested.



Dynasty Blue
R-24

Solid, medium blue-green, slightly iridescent glaze. With the use of varying amounts of copper, a slightly metallic effect can be obtained.



Begs
R-9

Milky white, somewhat fluid, gloss surface shows grey crackle when reduced. Medium application suggested.



Dark Red
R-15

A glossy, fluid glaze that reveals a maroon/red and brown/black surface. Medium application suggested.



Black Lacquer
R-25

A dependable Raku glaze producing a glossy black surface texture when fired at Cone 6. Medium to heavy application is recommended.



Bright Buff
R-10

A white surface glaze that is very fluid. With reduction can turn a tan/grey with iridescent highlights. Medium to thick application suggested.



Cornwall Stone
R-19

Yields a white/transparent surface that reduces to a splotchy gray smooth surface. Glossy but not extremely fluid. Medium application suggested.



Kingin Gold Silver
R-26

Produces a wide variety of lustrous, iridescent effects. Medium to heavy application is recommended.



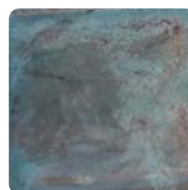
Borax
R-11

A very textured, non-gloss surface that yields a dull grey, black and yellow when reduced. Not fluid. Medium application suggested.



Raku Burst
R-20

Extremely colorful, very iridescent surface. Produces a deep brown, gold and copper finish. Best dipped medium to thick.



Sinju
R-27

A good pearlescent glaze that functions very well as a base for the addition of coloring oxides. Produces excellent metallic lusters.

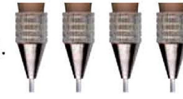
Underglaze Pens

Cone 06-10, Non-Toxic



Easy to use with just a light squeeze while drawing. Easy to clean when following easy instructions that come with each pen. All colors are strong and vibrant in Cone 04-06 and most will go all the way up to Cone 6 or even Cone 10.

Get four durable metal tips in Bold, Medium, Fine and Extra Fine with every purchase.



Axner Underglaze Pens... in 27 brilliant refillable colors!

Perfect for adding details, shading, and identification. Apply to bisque and create a variety of unique decorative designs.

White	TM601	Rose	TM608	Pink	TM616
Light Blue	TM602	Light Yellow	TM609	Purple	TM620
Turquoise	TM603	Orange	TM610	Maroon	TM621
Mahogany	TM604	Warm Grey	TM611	Bright Yellow	TM622
Chartreuse	TM605	Medium Blue	TM612	Red	TM625
Irish Green	TM606	Dark Blue	TM613	Bright Orange	TM626
Dark Green	TM607	Blue Green	TM615	Black	TM600



Axner Underglaze Pen Refills

Includes two refills per 2 oz. jar

Color	2 oz. Jar	Color	2 oz. Jar	Color	2 oz. Jar
Black	TM600R	Warm Grey	TM611R	Dark Blue	TM613R
White	TM601R	Medium Blue	TM612R	Blue Green	TM615R
Light Blue	TM602R	Purple	TM620R		
Turquoise	TM603R	Maroon	TM621R		
Mahogany	TM604R	Bright Yellow	TM622R		
Chartreuse	TM605R	Bright Orange	TM626R		
Irish Green	TM606R	Red	TM625R		
Dark Green	TM607R	Light Yellow	TM609R		
Rose	TM608R	Orange	TM610R		

Decorator Slip Trailer TM639

Great for glaze and slip trailing.

Includes:

- 2 oz. Bottle with Purple, 16-gauge 1" tip
- Pink, 18-gauge 1/2" tip
- Yellow, 20-gauge 1/2" tip
- "T" Cleaning Needle
- Tan, Fine Tip Cleaning Wire
- Two Tip Covers



Precision Trailing

Great for applying glaze around and between Waxline lines.

Trailing Bottle, 2 oz. A610903

Metal tip sold separately.

Metal Tips A7122

Available in Bold, Medium, Fine, Extra Fine.



Liquid Latex

Ammonia Base Liquid Latex IP-234 Use as a resist or masking material on ceramics when glazing. Brush on greenware or bisque where you do not want glaze coverage. After glaze application the latex material can be peeled off and other treatment applied to the clean area if desired. Should only be used with adequate ventilation. Not recommended for school use (see *Wax Resist for school use*). Available in pint, gallon, and 5-gallon containers.

Water Base Liquid Latex IP-233 Use as a removable resist. Apply on top of glaze or over greenware by slip-trail or brush. Peel off when dry and then apply another application of glaze or decoration. Apply and peel as many layers as you desire. Brush care: Dip brush in liquid soap and squeeze out excess prior to dipping brush into latex. This will allow for easy clean with soapy water after use with latex. Available in pint and gallon.



Wax Resist

Premium Wax Resist An excellent ready-to-use, water based wax emulsion. Industry standard for school and potters. Used for decoration and glaze-resistance where wax is applied. It has similar results to paraffin wax but without the mess or danger of heating. **Available in Pint (LM3017) Gallon (LM3017G)**

NOTE: Wax Resists will be damaged if frozen. We suggest caution when ordering for shipment to cold regions during winter.



Decorative Products *continued*



Bisque Tiles

Quality white wall tiles that have been bisqued and are ready for decoration. Use for wall tile, table tile, trivets or as test tiles. Order individually, by the dozen, or by the case.

4.25" x 4.25" tile LM-361
6" x 6" tile LM-362

Overglaze Oil Media

Available in 1-lb. and 8-lb. containers.

Cerdec #1420 For brushing LM-363
 (replaces #175)

Ferro C-30 For squeegee oil (screening) LM-364

Screen Print Medium 1597 LM-368

For squeegee oil (screening)

Magic Mender

Numerous uses such as repairs, attaching decorations, fixing hairline cracks, attaching greenware to bisque and bisque to bisque.

Magic Mender

For ceramic greenware and bisque, temperatures up to Cone 3. **4 oz.** A413610

High Fire Mender

For porcelain and stoneware, fired to high temperatures. **2 oz.** A413615



Lee's Fix-it

Helps with cracks, breaks, holes and re-attachments. Attaches dry to dry, bisque to bisque and glazed ware to glazed ware. Apply with wet brush or other means. Can be further smoothed with steel wool or sand paper before it is fired, but only if completely dry. We advise testing on scrap pieces to get the feel of using it. Can be mixed with stains or oxides and may be applied over and under glaze. We have had success with interesting applications such as attaching a bisque knob to the side of a previously fired piece, then dipped in glaze and successfully fired.

Pint and gallon RF522P

Laguna Metallics

Laguna offers high quality European metallic lusters available in two popular colors. The 8% concentration of metal exceeds most other products on the market and provides excellent coverage and brilliant results. Available in 2-gram, 25-gram, and 100 gram containers.

Laguna Gold LC-201

Laguna Palladium LC-202

Flocs

The most effective, simple, and economic flocculant available! Keeps glaze in suspension for longer periods of time. Helps prevent hard build ups on the bottom of glaze buckets. Works much better than epsom salts.

Pint A413059

Quart A413055



A colorful fun peice by Graham Erisman using our B-MIX clay body and Versa 5 color system with White MS-301 as a liner. You can follow Graham, as we do on Instagram @Erismansculpture.



- MY- 116 EM- 1000 Glazes, Cone 06
- MY- 164 Artificial Salt, Cuerda Seca and Mooncape Glazes, Cone 6
- MY- 167 Glaze Systems Creatable Colors, Cone 06 and Versa 5, Cone 5
- MY- 115 Dry Glazes, Cone 10-1
- MY- 162 Mystic, Crackle, and Crystal Blossom, Cone 5
- MY- 119 Moroccan Sand Glazes, Cone 5
- MY- 166 Dynasty Glazes, MS Oxide Stains and MS Englobes, Cone 5

MY-116



MY-164



MY-167



MY-115



MY-162



MY-119




MY-166



T H I N K

C L A Y

Show us your work!

 @LagunaClayCo

 @LagunaClay

Visit our site
LagunaClay.com

or call

CA; 800-4-Laguna

OH; 800-762-4354

FL; 800-843-7057

T H I N K

G L A Z E

T H I N K

 Laguna
CLAY COMPANY

**Laguna West
Headquarters**

14400 Lomitas Ave,
City of Industry, CA, 91746
Toll-Free (800) 452-4862
Local (626) 330-0631



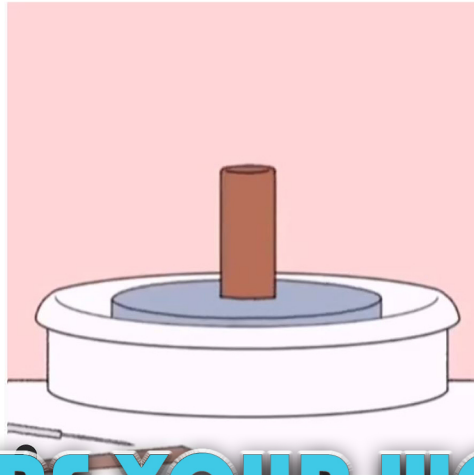
Laguna Ohio

61020 Leyshon Drive,
Byesville, OH, 43723
Toll-Free (800) 762-4354
Local (740) 439-4268

Laguna East

490 Kane Court
Oveido, FL, 32765
Toll-Free (800) 843-7057
Local (407) 365-7135

Join the clay community



SHARE YOUR WORK



#LagunaClay

#Bmix

#WedClay

#SpeckledClay

#LagunaGlaze



LagunaClay.com